

REFERENCES

WWW.ZINGAPERU.COM



REFERENCE NO:

SG - MY -

SBS TRANSIT

BASEPLATES

— EN - 09/04/2021

**SBS TRANSIT
BASEPLATES
PROJECT**

1/3

BASEPLATES PROJECT



THE CLIENT - SBS TRANSIT

SBS TRANSIT IS A MULTI-MODAL, LEADING PUBLIC TRANSPORT OPERATOR IN SINGAPORE OPERATING BUS, RAIL AND TAXI SERVICES.

CORRODED BASEPLATES

INSPECTIONS ARE CONDUCTED PERIODICALLY ON ALL RAIL ASSETS IN THE METRO SYSTEM.

CORRODED BASEPLATES THAT HAVE BEEN IDENTIFIED, ARE REPLACED AND SENT TO A WAREHOUSE WHERE THEY ARE SCRAPPED.

IN ORDER TO REDUCE WASTAGE AND OPTIMISE THE USAGE OF THESE ASSETS, AN INNOVATIVE SOLUTION NEEDS TO BE FOUND.

CAUSE OF CORROSION

CORROSION ON BASEPLATES TYPICALLY OCCUR IN AREAS WHERE THERE IS WATER PONDING – PRIMARILY CAUSED BY LEAKAGES IN THE TUNNEL.

THE ZINGA SOLUTION

THE ZINGA SOLUTION PROVIDES AN OPPORTUNITY TO REHABILITATE CORRODED BASEPLATES AND ELIMINATE THE NEED TO DISCARD USEFUL ASSETS.

ZINGANIZATION WILL PROMOTE A MORE SUSTAINABLE SOLUTION IN THE INDUSTRY – UPHOLDING ITS CAPACITY FOR MAXIMUM CORROSION PROTECTION AT ANY GIVEN TIME.

2/3

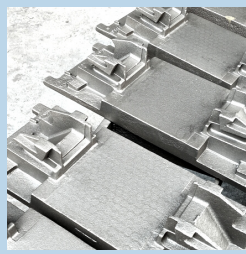


BASEPLATES PROJECT



BASEPLATES PICKED UP
USING A FLAT BED
TRAILER, THE BASEPLATES
WERE PICKED UP FROM
THE CLIENT'S WAREHOUSE
(22 PALLETS)

**STEP
01**



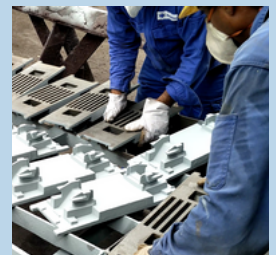
**STEP
02**

**ASSEMBLED IN
FABRICATION YARD**
BASEPLATES ARE
ASSEMBLED NEATLY FOR
THE AUTOBLAST MACHINE
IN THE FABRICATION YARD

BLASTING PROCESS

BASEPLATES ARE PUT THROUGH
THE AUTOBLAST MACHINE USING
ANGULAR METALLIC
ABRASIVES – ADHERING TO
PROPER SURFACE
PREPARATION STANDARDS
(SA 2.5)

**STEP
03**



ZINGANIZATION

BASEPLATES ARE
ZINGANIZED USING AN
AIRLESS SPRAY GUN. TWO
COATS OF 60μ OF ZINGA IS
APPLIED ONTO THE
SURFACE. (120μ IN TOTAL)

**STEP
04**



ASSEMBLY AND PACKING

ZINGANIZED BASEPLATES
ARE DRIED TO PERFECTION
AND ARE THEN
ASSEMBLED AND PACKED
FOR THE CLIENT – READY
FOR USE

**STEP
05**

